

| Code | Nm | Course | Notes |
|------|------|---|------------------|
| 1 | 6.8 | SL, P, 4(S), CM(S), 6(S), CM(S), 6(S), FLc | |
| 2 | 6 | SL, P, 8(S), 2, 8, P(S), CM(S), P, 9, P(S), FLc | |
| 3 | 4.7 | SL, P, 5, P(S), 16(S), P, 10, P(S), 16(S), 9, P(S), FLc | |
| 4 | 8.2 | SL, P, 4(S), PMO(S), FW(S), 4(S), PMO(S), 4, FLc | |
| 5 | 6 | SL, P, 6(S), FW, 6, P(S), FLc | |
| 6 | 9.6 | SL, P, 6(S), FW, PMO, 2, FW, 2, FW, FLc | |
| 7 | 9.4 | SL, P, 6(S), FW, 2, FW, 2, FW, FLc | |
| 8 | 7.9 | SL, P, 6(S), FW, PMO, 2, FW, 6, P(S), FLc | |
| 9* | 6 | SL, P, AB, P(S), CM(S), P, 8, P(S), FLc | Spring tide race |
| 10* | 6.6 | SL, P, 4(S), OLO(S), AB(S), 1, P(S), FLc | Spring tide race |
| 11* | 7.8 | SL, P, AB, FW, 4, 6, P(S), FLc | Spring tide race |
| 12* | 7.8 | SL, AB, CM(S), ND1, CM(S), ND5, FLc | Spring tide race |
| 13* | 11.8 | SL, P, AB, FB, FLf | Spring tide race |
| 14* | 12.7 | SL, P, OLO(S), WC, FLf | Spring tide race |
| 15* | 9.2 | SL, P, 6(S), FW(S), OLO(S), FLc | Spring tide race |
| 16 | 14.7 | SL, P, 6(S), FW(S), PI, FB, PI(S), FLf | |
| 17 | 14.7 | SL, P, 6(S), FW(S), OLO, FB, FLf | |
| 18 | 8 | SL, P, 6(S), FW(S), FB, OLO, FLf | |
| 19 | 7.9 | SL, P, 6(S), FW(S), AB, FLf | |
| 20 | - | SPECIAL COURSE | |

CYC Course Card – Cruisers

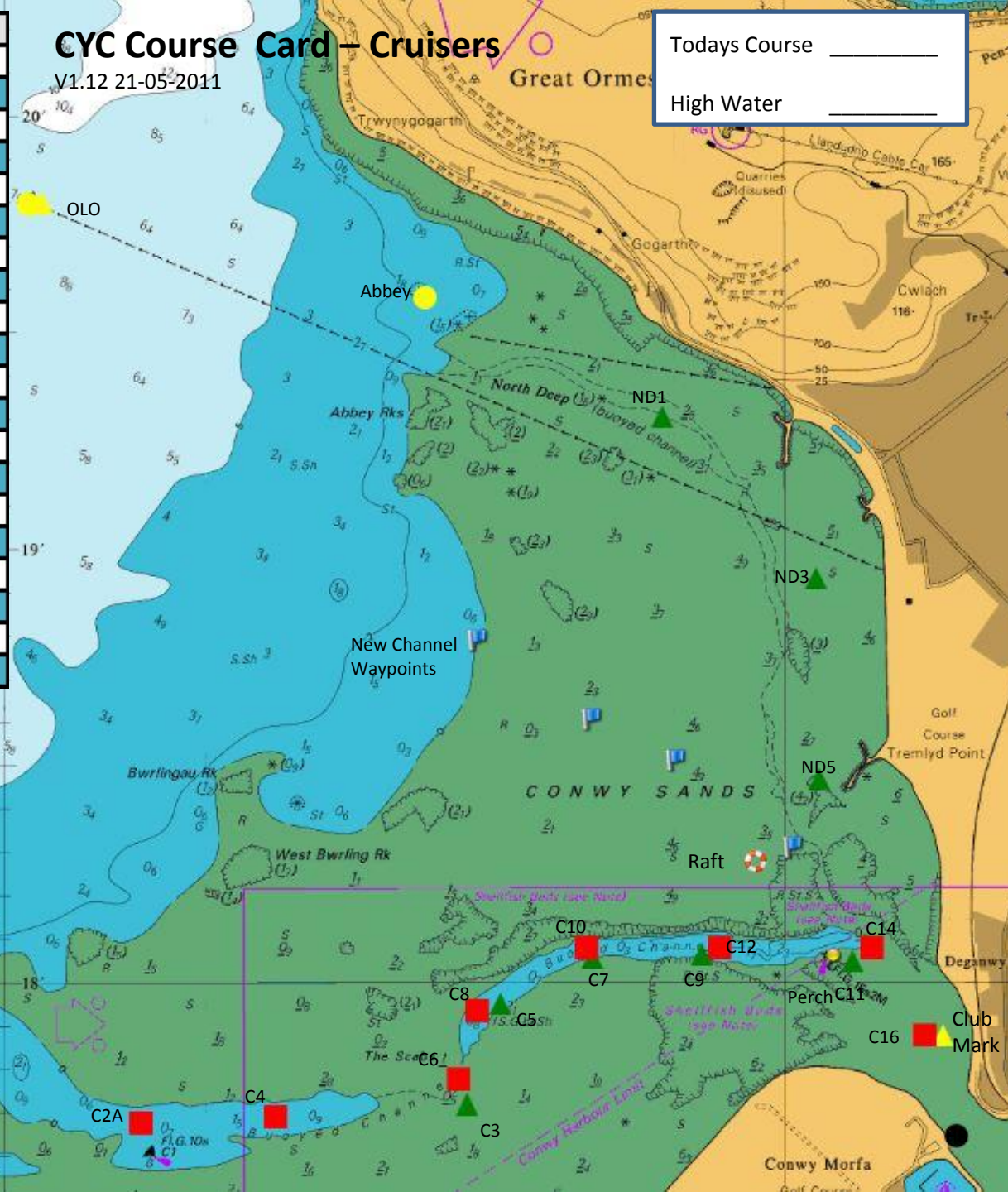
V1.12 21-05-2011

Today's Course _____
 High Water _____

* indicates courses over the banks tide to be 7.2 m. or more. Race start is no more than 1hr 45min before HW.

The OOD, using the VHF on channel 37 (M) can shorten courses at his discretion asking boats to record their own time.
 C16 is the substitute for CM if CM is missing.
 All boats finishing FLf/FL2 (or if OOD not present) to record their own time and report by VHF

DEPTHS AND BUOYAGE
 (see Note)



Club Mark

Course Abbreviations

ChCo Yachts must pass the correct side of marks P, 9, 7, 8, 6, 4, 1A, 2A, 1, 2.

SL C.Y.C. Starting Line.

FLc C.Y.C. Finishing Line.

Both the above are prolongations of a line formed by the two flagstaffs on and before the C.Y.C. Starting Tower (see Sailing Instructions for a full definition).

FLf Fairway Finishing Line - a line between the Fairway Buoy and Channel Buoy No.2. Yachts must cross the finishing line within 5 boat lengths of the Fairway Buoy.







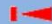
FL2 No.2 Finishing Line - a line between Channel Buoys No.2 and No.1. Yachts must cross the finishing line within 5 boat lengths of the Channel No.2 Buoy.

All marks are left to Port unless otherwise indicated.

All course lengths and positions of buoys are approximate.

This Course Card may be updated during the season.

Classes will generally start at 5 minute Intervals. Use C16 when club mark not in place.

| STARTING SIGNALS | | |
|--|--|---|
| CLASS FLAG  | Warning signal, 5 minutes to start (or as defined in the sailing instructions) | Caution Buoy positions are approximate and should not be used as waypoints |
| CLASS FLAG   | Preparatory signal, 4 minutes to start. | Cruiser Code Flag R  |
| CLASS FLAG  | Flag P Removed 1 minute before start. | COD & Squib Code Flag E  |
| CLASS FLAG REMOVED  | Start. | |

Course Markers and Waypoints

| BUOY NAME/NUMBER | RACING MARK | TYPE | COLOUR | LIGHT CHARACTER | POSITION | |
|----------------------|-------------|-------------|-----------|-----------------|------------|-------------|
| FAIRWAY | FW | SPHERICAL | RED/WHITE | L FL(W) 10 SEC | 53-17-948N | 003-55-584W |
| C2 | 2 | PORT HAND | RED | FL R 10 SEC | 53-17-940N | 003-54-520W |
| C1 | 1 | STBD HAND | GREEN | FLG 10 SEC | 53-17-835N | 003-54-580W |
| C2A | 2A | PORT HAND | RED | FL(2) R10 SEC | 53-17-682N | 003-53-491W |
| C4 | 4 | PORT HAND | RED | FL(4) R 20 SEC | 53-17-704N | 003-52-975W |
| C3 | 3 | STBD HAND | GREEN | FL(6) G 15 SEC | 53-17-725N | 003-52-240W |
| C6 | 6 | PORT HAND | RED | FL(6) R 15 SEC | 53-17-780N | 003-52-272W |
| C8 | 8 | PORT HAND | RED | L.FL R 8 SEC | 53-17-940N | 003-52-200W |
| C5 | 5 | STBD HAND | GREEN | L.FL G 8 SEC | 53-17-950N | 003-52-110W |
| C10 | 10 | PORT HAND | RED | FL(3) R 15 SEC | 53-18-085N | 003-51-780W |
| C7 | 7 | STBD HAND | GREEN | FL(3) G15 SEC | 53-18-062N | 003-51-756W |
| C9 | 9 | STBD HAND | GREEN | FL(5) G 20 SEC | 53-18-066N | 003-51-335W |
| C12 | 12 | PORT HAND | RED | FL(5) R 20 SEC | 53-18-090N | 003-51-265W |
| C11 | 11 | STBD HAND | GREEN | Q.G 1 SEC | 53-18-064N | 003-50-760W |
| C14 | 14 | PORT HAND | RED | L.FL R 15 SEC | 53-18-090N | 003-50-685W |
| C16 | 16 | PORT HAND | RED | FLR 6 SEC | 53-17-875N | 003-50-481W |
| OTHER MARKS | | | | | | |
| BEACON JETTY | B | JETTY | | UNLIT | 53-17-655N | 003-50-359W |
| PERCH LIGHT | P | STEEL TOWER | | L.FL G 15 SEC | 53-18-058N | 003-50-837W |
| PEN OUTFALL | PMO | STBD HAND | YELLOW | FL Y 5 SEC | 53-17-460N | 003-54-946W |
| North Deep 1 | ND1 | | | UNLIT | 53-19-311N | 003-51-490W |
| North Deep 3 | ND3 | | | UNLIT | 53-18-944N | 003-50-900W |
| North Deep 5 | ND5 | | | UNLIT | 53-18-403N | 003-50-869W |
| Harbour Mark Deganwy | HD | | | FLR(2+1) 10sec | 53-17-348N | 003-49-739W |
| Orme Long Outfall | OLO | Yellow | | UNLIT | 53-19-804N | 003-53-869W |
| Abbey Buoy | AB | Yellow | | UNLIT | 53-19-570N | 003-52-515W |
| Ten Foot Bank | FB | Port Hand | Red | FL | 53-19-470N | 004-02-85W |
| Raft | R | | | | 53-18-287N | 003-51-133W |
| NCWP1 | | | | | 53-18-787N | 003-52-199W |
| NCWP2 | | | | | 53-18-607N | 003-51-761W |
| NCWP3 | | | | | 53-18-512N | 003-51-438W |
| NCWP4 | | | | | 53-18-309N | 003-40-985W |
| Club Mark | CM | | | | 53-17-88N | 003-50-41W |
| Puffin Island | PI | | | | | |
| Conwy Cob Bouy | CC | | | | | |

The information on this sheet is for guidance only and is provided in good faith. It should not be used for navigation.

Conway Yacht Club 2011

